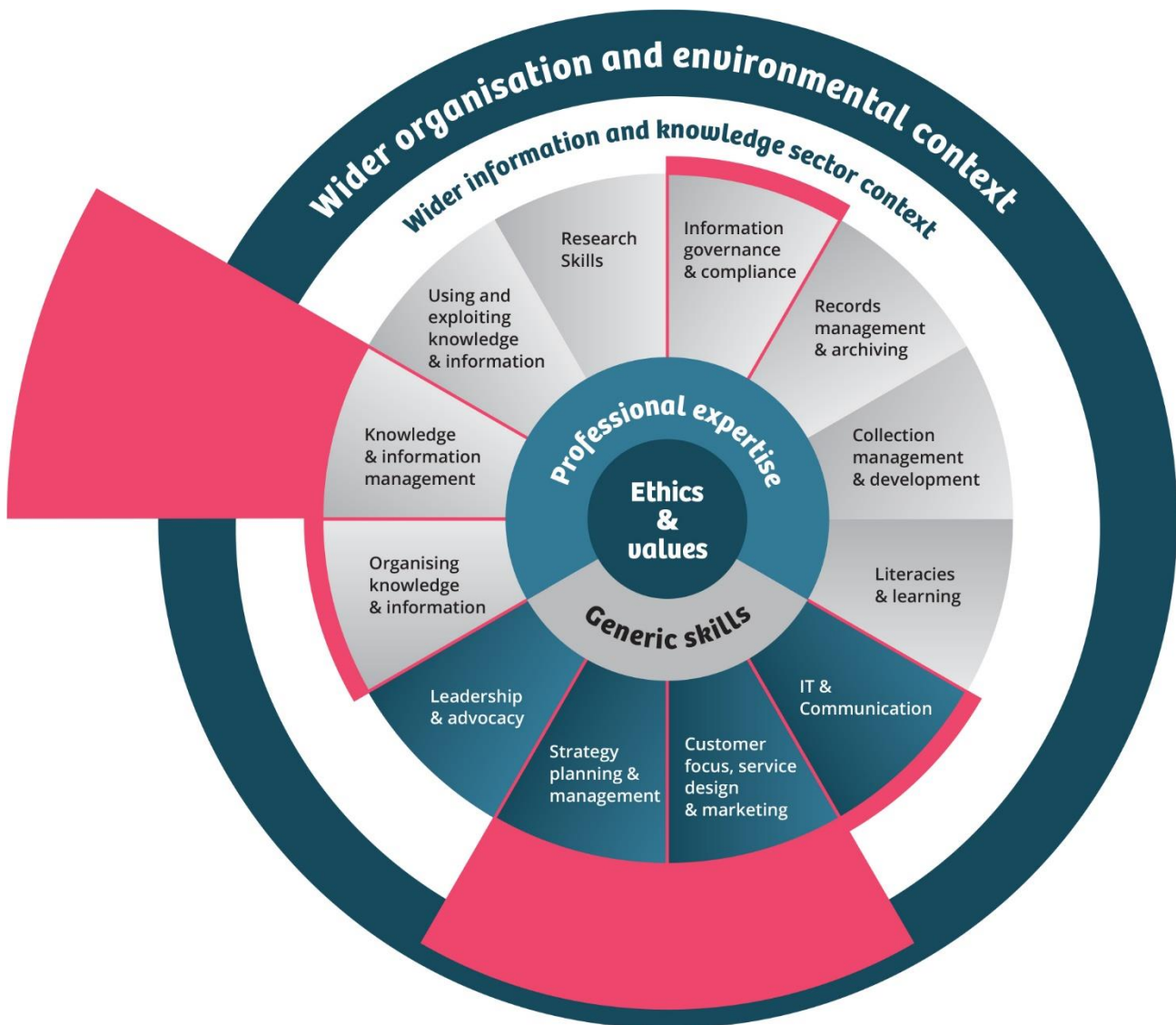


PKSB

(Professional Knowledge & Skills Base)
for Knowledge Management



Sections that map to *BSI ISO 30401:2018 Knowledge management systems - requirements* are indicated in red, these are the sections that you should focus on if you are using the PKSB for Knowledge Management Chartership



Chartership for Knowledge Management

At a Glance

A self-directed CPD journey developing you as a Knowledge Management practitioner

Self-assessment of knowledge and skills using CILIP's online Professional Knowledge and Skills Base (PKSB) tool

Aligns with BSI ISO 30401:2018 knowledge management systems - requirements

Assessed on

- A 1,000-word evaluative statement, written as a reflective KM practitioner, answering three criteria
 - Personal Performance
 - Organisational context
 - Wider professional context
- Supporting evidence to the statement showing your self-development journey as a KM practitioner
- Your personal PKSB assessment
- Your CV
- Your job description

